

Woodbridge Cruising Club. Members' Anchorages Ramsgate Road

Document Information	
Date	Sunday, 14 November 2004
Document History	Created with template LabNotes(2).dot Sunday, November 21, 2004. Version 1 released.
Editor	peter wilkinson
Contributed by	Peter Wilkinson, Witchfinder
Last Visited	August 2004
Source Location	c:\local\yacht\wcc\ramsgate\anchoragesramsgateroad(1).doc

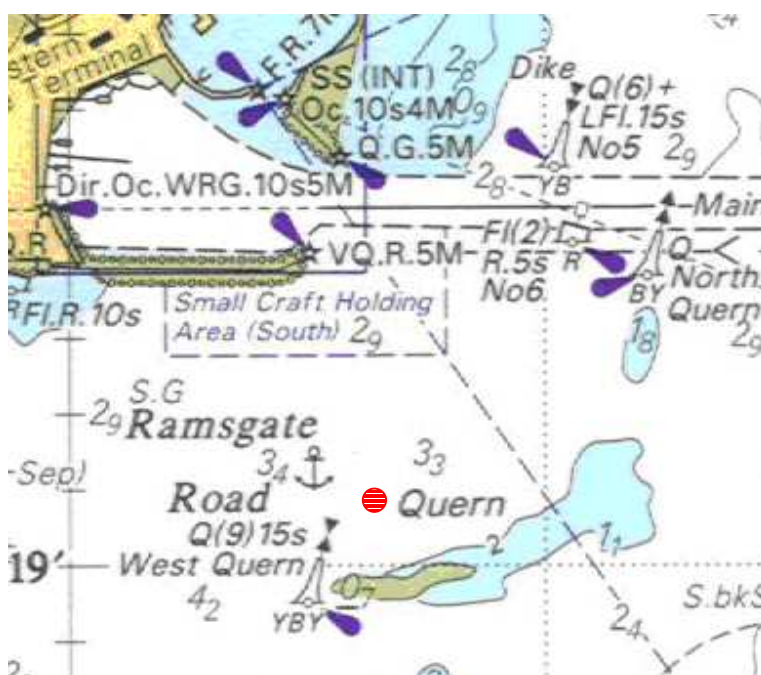
Ramsgate

Heading down-Channel from the Orwell or Deben is likely to see you at Ramsgate as the tide turns foul. While it is possible to beat round South Foreland against the tide, it's no fun!

It is also hardly worth, for the 6 or so hours you have to sit out the foul tide, the cost and fuss of getting a berth inside Ramsgate marina. **Ramsgate Road** offers a safe and fairly sheltered anchorage in about 3 or 4m.

From the North

Once you have crossed the port entrance fairway, head in (E) on the yacht track to North Quern (Q) and then, with most of the "Christmas tree" of entry buoy lights behind you the small West Quern (Q 9) is quite easy to pick out. We anchor quite close to it, under the shelter of Quern bank.



From the South

We have generally come up the *Gull Stream* from which the North Quern light is quite easily seen: then follow the route from the north. From the inshore *Ramsgate Channel* the line from the last buoy, B1 (G unlit) direct to West Quern gets a bit shallow. Also West Quern is not easy to see against the fairway entry lights.

Not to be used for navigation
 Reproduced from Admiralty chart 5605.9 by permission of the Controller of Her Majesty's Stationery Office and the hydrographic offices of Belgium, France and the United Kingdom (<http://www.ukho.gov.uk>)